

# BRIDGE101A

## BRIDGE/STRAIN GAUGE DATA LOGGER



### Features

- Multiple Start/Stop Function
- Ultra High Speed Download
- 1 Million Reading Storage Capacity
- Memory Wrap
- Battery Life Indicator
- Optional Password Protection
- Programmable Alarm
- Field Upgradeable

### Benefits

- Simple Setup and Installation
- Minimal Long-Term Maintenance
- Long-Term Field Deployment

### Applications

- Strain Gauge
- Load Cell
- Pressure Transducer
- Torque Sensors
- Load Bolts
- Position Transducer



The Bridge101A is part of MadgeTech's series of low cost, state-of-the-art data logging devices. MadgeTech has taken the lead in offering the most advanced, low cost, battery powered data loggers in the world today.

The Bridge101A offers a multiple start/stop function, ultra-high speed download capability, 1 million reading storage capacity, optional memory wrap, battery life indicator, optional password protection, programmable alarms and more. The Bridge101A is priced at

\$499.00 each and can be delivered from stock now. Our research has shown that the Bridge101A is second to no other data logger when it comes to price and performance.

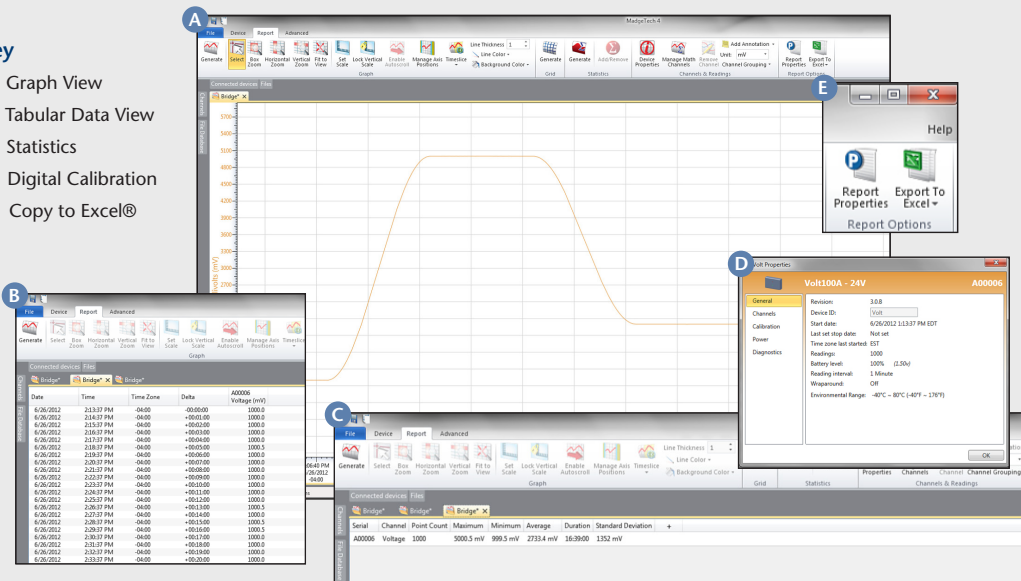
Using the MadgeTech Software, starting, stopping and downloading from the Bridge101A is simple and easy. Graphical, tabular and summary data is provided for analysis and data can be viewed in V, mV and  $\mu$ V. The data can also be automatically exported to Excel® for further calculations.

As the leader in low power data logger technology, MadgeTech continuously improves its products and develops solutions to meet ever-changing challenges. The Bridge101A was designed with our customers in mind. MadgeTech offers free firmware upgrades for the life of the product so that data loggers already deployed in the field can grow with new technological developments. Units do not need to be returned to the factory for upgrades. The user can do this automatically from any PC.

## MADGETECH DATA LOGGER SOFTWARE

### Key

- A** Graph View
- B** Tabular Data View
- C** Statistics
- D** Digital Calibration
- E** Copy to Excel®



- ### Software Features:
- Multiple graph overlay
  - Statistics
  - Digital calibration
  - Zoom in/ zoom out
  - Lethality equations (F0, PU)
  - Mean Kinetic Temperature
  - Full time zone support
  - Data annotation
  - Min./Max./Average lines
  - Data table view
  - Automatic report generation
  - Summary view

6 Warner Road · Warner, NH 03278

Find Quality Products Online at:

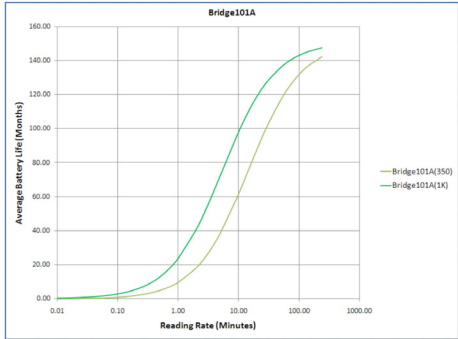
[www.GlobalTestSupply.com](http://www.GlobalTestSupply.com)

[sales@GlobalTestSupply.com](mailto:sales@GlobalTestSupply.com)

# BRIDGE101A SPECIFICATIONS\*

\*SPECIFICATIONS ARE SUBJECT TO CHANGE WITHOUT NOTICE. SPECIFIC WARRANTY REMEDY LIMITATIONS APPLY. CALL 1-603-456-2011 OR GO TO WWW.MADGETECH.COM FOR DETAILS.

|   |   |                               |                                |
|---|---|-------------------------------|--------------------------------|
| <b>Nominal Range:</b>                       | ±30 mV  | ±150 mV                       | ±1000 mV                       |
| <b>Measurement Range:</b>                   | ±30 mV  | ±160 mV                       | ±1200 mV                       |
| <b>Resolution:</b>                          | 1 µV  | 5 µV                          | 50 µV                          |
| <b>Calibrated Accuracy:</b>                 | ±0.01% FSR;<br>±3 Microvolts  | ±0.01% FSR;<br>±16 Microvolts | ±0.01% FSR;<br>±120 Microvolts |
| <b>Input Range:</b>                         | 0 to 2.5V   | 0 to 2.5 V                    | 0 to 2.5 V                     |
| <b>Reference Voltage:</b>                   | 2.5 V   | 2.5 V                         | 2.5 V                          |
| <b>Reading Rate:</b>                        | 4Hz to 1 every 24 hours   |                               |                                |
| <b>Memory:</b>                              | 1,000,000 readings; software configurable memory wrap<br>330,000 readings in multiple start/stop  |                               |                                |
| <b>Wrap Around:</b>                         | Yes   |                               |                                |
| <b>Start Modes:</b>                         | <ul style="list-style-type: none"> <li>• Immediate start</li> <li>• Delay start up to 24 months</li> <li>• Multiple pushbutton start/stop</li> </ul>  |                               |                                |
| <b>Stop Modes:</b>                          | <ul style="list-style-type: none"> <li>• Manual through software</li> <li>• Timed (specific date and time)</li> </ul>   |                               |                                |
| <b>Multiple Start/Stop Mode:</b>            | Start and stop the device multiple times without having to download data or communicate with a PC   |                               |                                |
| <b>Multiple Start/Stop Mode Activation:</b> | <ul style="list-style-type: none"> <li>• To start the device:<br/>Press and hold the pushbutton for 5 seconds, the green LED will flash during this time. The device has started logging.</li> <li>• To stop the device:<br/>Press and hold the pushbutton for 5 seconds, the red LED will flash during this time. The device has stopped logging.</li> </ul> |                               |                                |
| <b>Real Time Recording:</b>                 | The device may be used with PC to monitor and record data in real time  |                               |                                |
| <b>LED Functionality:</b>                   | <ul style="list-style-type: none"> <li>• Green LED blinks:<br/>10 second rate to indicate logging<br/>15 second rate to indicate delay start</li> <li>• Red LED blinks:<br/>10 second rate to indicate low battery and/or full memory<br/>1 second rate to indicate an alarm condition</li> </ul>   |                               |                                |

|                               |  |
|-------------------------------|--|
| <b>Password Protection:</b>   | An optional password may be programmed into the device to restrict access to configuration options. Data may be read out without the password.   |
| <b>Engineering Units:</b>     | Native measurement units can be scaled to display measurement units of another type. This is useful when monitoring voltage outputs from different types of sensors such as strain gauges and load cells.                      |
| <b>Battery Type:</b>          | 3.6V lithium battery included; <b>user replaceable</b>   |
| <b>Battery Life:</b>          | <p>10 months typical at a 1 minute reading rate with a 350 Ω load</p> <p>2 years typical at a 1 minute reading rate with a 1000 Ω load</p>  |
| <b>Time Accuracy:</b>         | ±1 minute/month (at 20 °C/68 °F, stand alone data logging)   |
| <b>Computer Interface:</b>    | USB (interface cable required); 115,200 baud   |
| <b>Software:</b>              | XP SP3/Vista/Windows 7/Windows 8 (MadgeTech 4 Only)  |
| <b>Operating Environment:</b> | -40 °C to +80 °C (-40 °F to +176 °F),<br>0 %RH to 90 %RH non-condensing  |
| <b>Dimensions:</b>            | 1.4 in x 2.5 in x 0.6 in<br>(36 mm x 64 mm x 16 mm)  |
| <b>Weight:</b>                | 0.8 oz (24 g)  |
| <b>Materials:</b>             | ABS Plastic  |
| <b>Approvals:</b>             | CE   |

**BATTERY WARNING:** FIRE, EXPLOSION, AND SEVERE BURN HAZARD. DO NOT RECHARGE, DISASSEMBLE, HEAT ABOVE 212 °F, INCINERATE OR EXPOSE CONTENTS TO WATER.

## ORDERING INFORMATION

| MODEL                   | DESCRIPTION                              | PRICE (U.S.) |
|-------------------------|--|--------------|
| Bridge101A-30           | ±30mV Bridge/Strain Data Logger          | \$499.00     |
| Bridge101A-150          | ±150mV Bridge/Strain Data Logger         | \$499.00     |
| Bridge101A-1000         | ±1000mV Bridge/Strain Data Logger        | \$499.00     |
| Calibration Certificate | Non-NIST Calibration Certificate         | \$40.00      |
| IFC200                  | Software, manual and USB interface cable | \$119.00     |
| LTC-7PN                 | Replacement battery for Bridge101A       | \$10.00      |

ASK ABOUT OUR OTHER DATA LOGGERS

- Temperature
- Humidity
- Pressure
- pH Level
- Shock
- LCD Display
- Pulse/Event/State
- Current
- Voltage
- Wireless
- Intrinsically Safe
- Spectral Vibration
- Motion

For Quantity Discounts call 603-456-2011 or email [sales@madgetech.com](mailto:sales@madgetech.com)



6 Warner Road · Warner, NH 03278

DOC 1242009-00 REV 8 2014.07.22

Find Quality Products Online at:

[www.GlobalTestSupply.com](http://www.GlobalTestSupply.com)

[sales@GlobalTestSupply.com](mailto:sales@GlobalTestSupply.com)