

# DATA TRANSFER SOFTWARE



The L-858D and L-478 series light meters are designed to learn the exposure characteristic of your digital camera. By compensating for exposure and dynamic range limitations, these programmable meters can guide in capturing a perfectly exposed digital image for the ultimate in reproduction quality print or presentation.

The link between these programmable light meters and the camera is Sekonic's Data Transfer Software (DTS). The Sekonic DTS program evaluates test target images capture from your camera and creates an exposure profile of your camera's capabilities. These profiles are then transferred to either the L-858D or L-478 series light meters for real time use. In addition, the DTS program offers exposure profile editing, loading and unload different profiles as well as firmware update. Custom Settings for both the L-858D and L-478 series are quick and easy through the use of the DTS program in place of making the changes in the meters.

## The only light meters that show you the Dynamic Range of your D-SLR.

The dynamic Range of a digital camera can be different due to it's unique camera sensor file format (Tiff, JPEG, RAW, etc.), selected ISO and more. Knowing the limits of the digital camera (or film) is essential in exposure control. The graph below shows the Latitude or Dynamic range of a particular digital camera (or film), as well as the Clipping points (where the exposure exceeds the dynamic range of the sensor film).



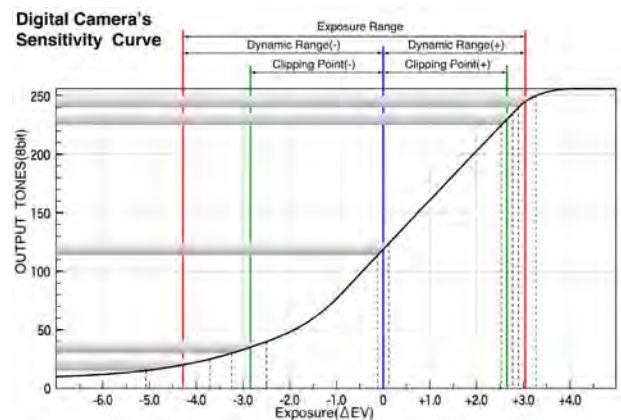
Photographed by a Camera with Narrow Exposure Range



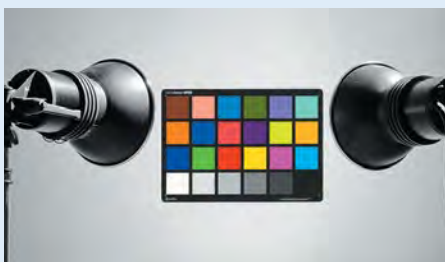
Photographed by a Camera with Normal Exposure Range



Photographed by a Camera with Wide Exposure Range



## Exposure profiling



### Step 1

Shoot target (X-Rite or datacolor brand) with the equipment you use most.



### Step 2

Transfer images into your computer. If images are captured as RAW files convert them to TIFF or JPEG for analyzing. Enter ISO, incident and reflected shooting data into the Data Transfer Software and DTS will evaluate and create a graph of dynamic range and clipping points for your camera. Name and save the profile data for future use.



### Step 3

Connect the meter to your MAC or PC computer and transfer the exposure pro-files. Profiles can be stored and recalled at any time. Exposure latitude warnings alert you when the exposure exceeds the range of the camera.

Display a graph of the sensitivity curve for your DSLR

Data Transfer Software automatically analyzes the test images and displays the sensitivity curve of your camera. It also enables you to set the dynamic range and clipping point in your way, and to transfer the exposure profile data into the light meter. Additionally, it is possible to compare multiple exposure profiles on a basis of ISO sensitivity or camera.

**The Wizard - The Easy way to create Exposure Profile**

The Wizard enables you to create the exposure profile in an easy way by just following the instruction on the screen. To create a new profile, select "Quick Mode - for a fast and simple profile", "Advanced Mode - for a more precise exposure profile" or "Manual Input Mode - direct input Manually".



Main Screen



"Profile Mode" Selection Screen



"Select Target" Screen

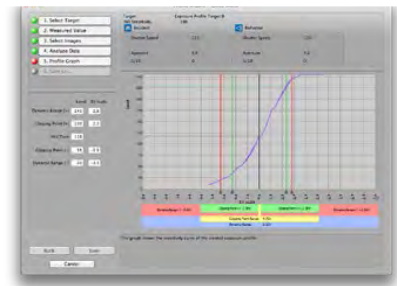


"Select Light Source" Screen

Analyze the test images automatically

A preview and Exif information are displayed when click-ing a thumbnail image, so you can be free from entering the exposure value of each selected image.

Just select the necessary images and align the cross mark for the analyzing area, and then the data is automatically analyzed.

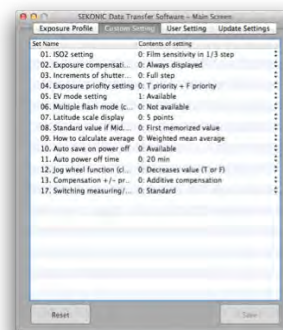


Transfer the data via USB from the computer to the light meter.

Connect the USB cable to the USB port (on the side of the light meter) and the other end to the USB port (on the computer) to transfer the computer data to the light meter. While transferring the data, the USB icon blinks on the connected light meter's screen to confirm that the data transfer is in progress and the meter and computer are correctly connected. It's also possible to transfer data from the light meter to the computer.

Customize your meters via Data Transfer Software

Custom Settings for both the L-858 and L-478 series are quickly and easily made through the Data Transfer Software. Both the meter's firmware and Data Transfer Software are automatically updated while DTS is connected to the internet.



Custom Setting



Update Screen